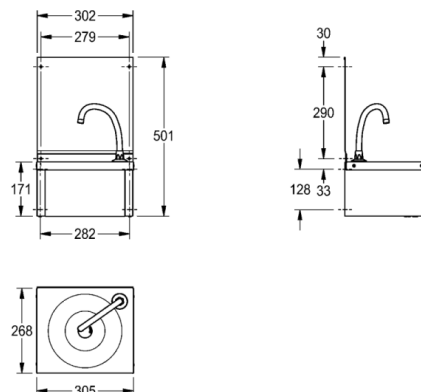


ANIMA washbasin with knee actuation

MODEL RANGE: ANIMA | ANMX216 | 203.0000.038

Washbasins & Washtroughs | Wash basins



Knee operated wash hand basin is manufactured from stainless steel – satin polish finish, material thickness 0.9 mm. Supplied complete with water spout positioned in rear right hand corner and 32 mm waste outlet. Note: The pre-mixing valve and the pipework linking the water spout to the knee operated front panel is all supplied with the washbasin. Wall mounted by fitting a top joggle strip under the upstand return and by screw fixing through the integral rear brackets. Screws and plugs are not supplied.

Dimensions 305 x 501 x 268 mm (W x H x D)

Bowl Dimensions 240 x 125 mm (W x D)

Technical data

Bowl depth	171.00 mm
Bowl width	221.00 mm
Bowl width	221.00 mm
Material thickness	0.90 mm
Overall depth	268.00 mm
Overall height	501.00 mm
Overall width	305.00 mm
Tap hole diameter	32.00 mm
Material	Stainless steel
Material code	1.4301 Chrome Nickel steel V2A
Tailor made	No
Tap hole position	Right
Tap ledge	No
Type of mounting	Wall mounting
Waste hole position	Center
Bowl position	Center
Bowl finish	Satin finish
Bowl shape	Circle
Colour	No colour
Number of bowls	1.00000
Overflow	No
Rear upstand	No
Splash back	Yes
Surface finish	Satin finished
Number of tap holes	1.00000
Waste kit included	Yes
Waste size	DN 25
Splash back height	330.00 mm
Type of basin	Vanity basin
Product code	203.0000.038